



**SNMMI**

SOCIETY OF  
NUCLEAR MEDICINE  
AND MOLECULAR IMAGING

ANNUAL MEETING



# **SNMMI** **ANNUAL MEETING**

**June 23 – 26, 2018 > Philadelphia, PA > [www.snmmi.org/AM2018](http://www.snmmi.org/AM2018)**

## **IN THIS ISSUE**

### **Get Social**

View the great line-up of networking and special events.

### **Session Highlights**

Get a sample of sessions from the 10 available tracks.

### **See Who's Exhibiting**

More than 160 companies are expected in the exhibit hall.

**Preview Magazine > Issue 2**

RUBY-FILL® (Rubidium Rb 82 Generator)  
and RUBY Rubidium Elution System

# Elution Evolution

Advancing cardiac PET imaging to be:

## Precise

Constant-activity infusion option  
Maintains consistent activity rate profiles  
throughout the life cycle of the generator<sup>1-3</sup>

## Flexible

Accurate patient-specific dosing  
Long shelf life—60 days

## Efficient

Automated daily quality control  
Built-in safety controls



Leap forward with RUBY-FILL®

## Indication and Important Safety Information

RUBY-FILL® Rubidium Rb 82 Generator is a closed system used to produce rubidium Rb 82 chloride injection for intravenous use. Rubidium Rb 82 chloride injection is a radioactive diagnostic agent indicated for Positron Emission Tomography (PET) imaging of the myocardium under rest or pharmacologic stress conditions to evaluate regional myocardial perfusion in adult patients with suspected or existing coronary artery disease.

### WARNING: UNINTENDED STRONTIUM-82 (Sr-82) AND STRONTIUM-85 (Sr-85) RADIATION EXPOSURE

*Please see full prescribing information for complete boxed warning*

- Unintended radiation exposure occurs when the levels of Sr-82 or Sr-85 in the rubidium Rb 82 chloride injection exceed specific limits.
- Perform generator eluate tests:
  - 1) Determine Rb-82, Sr-82, Sr-85 levels in the eluate:
    - Once daily, prior to any drug administration, and
    - With additional daily tests after detection of an Alert Limit.
  - 2) Stop use of the generator at its Expiration Limit.

You are encouraged to report negative side effects of prescription drugs to the FDA. Visit [www.fda.gov/safety/medwatch](http://www.fda.gov/safety/medwatch), or call 1-800-FDA-1088.

**References:** 1. Epstein JN, Ziadi MC, Benelfassi A, Beanlands RS, deKemp RA. An 82Rb infusion system for quantitative perfusion imaging with 3D PET. *Appl Radiat Isot.* 2004;60(6):921-927. 2. Klein R, Adler A, Beanlands RS, deKemp RA. Precision-controlled elution of a 82Sr/82Rb generator for cardiac perfusion imaging with positron emission tomography. *Phys Med Biol.* 2007;52(3):659-673. 3. Klein R, Renaud JM, Ziadi MC, et al. Intra- and inter-operator repeatability of myocardial blood flow and myocardial flow reserve measurements using rubidium-82 pet and a highly automated analysis program. *J Nucl Cardiol.* 2010;17(4): 600-616.

**RUBY** RUBIDIUM ELUTION SYSTEM

The risk information provided here is not comprehensive.  
Please see full Prescribing Information at [www.draximage.com](http://www.draximage.com).

RUBY-FILL® is a registered trademark used under license by Jubilant DraxImage, Inc.

**RUBY-FILL**®  
RUBIDIUM Rb82 GENERATOR



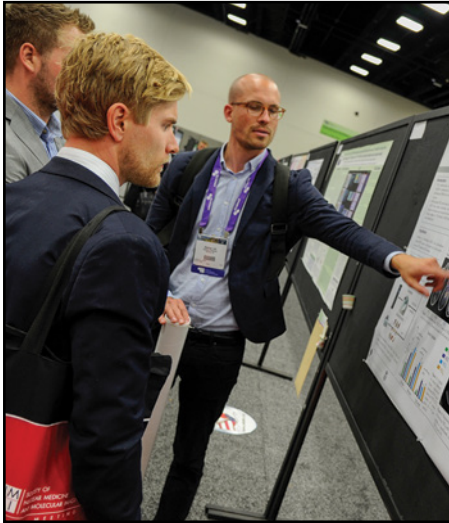
Jubilant DraxImage Inc.  
16751 Trans-Canada Highway, Kirkland, Québec, Canada H9H 4J4  
Phone: 1.888.633.5343 / 514.630.7080 Fax: 1.866.431.4288 / 514.694.3865  
[www.draximage.com](http://www.draximage.com)  
DRAXIMAGE® is a registered trademark of Jubilant DraxImage Inc. 2017CARD066



# THE SNMMI 2018 ANNUAL MEETING

## Imaging the Future of Human Health

Join your colleagues June 23-26 in Philadelphia, Pennsylvania at the SNMMI 2018 Annual Meeting!



### By the numbers...

- **NEW FOR 2018!** All the same great education, science, research, and networking condensed to a new **4-day** format.
- **5,600** attendees, representing more than **60** countries
- **195+** accredited CE and Scientific sessions
- More than **25** CE credit hours available
- **800+** scientific posters and **850+** scientific oral presentations, featuring the leading research in the profession.
- **160+** top industry suppliers in a world-class exhibit hall
- **100** sessions and **150** hours of on-demand content, and nearly **1,000** scientific and poster presentations, with the Annual Meeting's Virtual Meeting and Virtual Poster Hall

Make history in Philadelphia! Register today!

[www.snmmi.org/AM2018](http://www.snmmi.org/AM2018)

# SCHEDULE AT A GLANCE

**IMPORTANT NOTICE: SNMMI has condensed the 2018 meeting from five to four days to help reduce your time away from work!**

## SATURDAY June 23, 2018

7:00–9:30 am  
Hot Trot 5K Run/Walk

8:00 am–4:00 pm  
Categorical Seminars

8:00 am–4:00 pm  
SNMMI-TS CE Courses

8:00 am–6:15 pm  
Nuclear Medicine Review Course (NMRC) – Day 1

8:30 am–5:30 pm  
Student Technologist Registry Review (STRR) – Day 1

10:00 am–3:45 pm  
Educators Forum I & II

1:30–4:45 pm  
SNMMI CE Courses

5:00–6:00 pm  
Saturday Evening Opening Ceremony

6:00–8:00 pm  
Welcome Reception: Exhibit and Poster Hall Opening

8:00 pm–End  
User Meetings

## SUNDAY June 24, 2018

6:00–8:00 am  
User Meetings

8:00 am–5:30 pm  
Nuclear Medicine Review Course (NMRC) – Day 2

8:00–9:30 am  
Opening Plenary Session: Henry N. Wagner Jr., MD, Lectureship

9:30 am–4:30 pm  
Exhibit Hall

10:00 am–8:30 pm  
Scientific & Educational Poster Hall

12:15–2:00 pm  
Technologist Plenary Session & Awards Recognition

12:30–2:00 pm  
Young Professionals Committee (YPC) Knowledge Bowl

12:30–6:15 pm  
SNMMI CE Courses & Scientific Abstract Presentations

2:30–5:30 pm  
Student Technologist Registry Review (STRR) – Day 2

2:45–4:45 pm  
Educators Forum III

3:00–6:15 pm  
SNMMI-TS CE Courses & Scientific Abstract Presentations

4:45–6:15 pm  
Radiopharmaceutical Sciences Council (RPSC)/CMIT Basic Science Summary Session

4:30–6:00 pm  
Emerging Technologies Session (CMIT) #1 (Non-CE)

6:30–8:30 pm  
RPSC/CMIT Poster Mixer

6:30 pm–End  
User Meetings

## MONDAY June 25, 2018

6:00–8:00 am  
User Meetings

8:00–9:30 am  
SNMMI Business Meeting and Special Plenary/Cassen Lectureship

9:00 am–6:00 pm  
Scientific & Educational Poster Hall

9:30 am–4:30 pm  
Exhibit Hall

10:00–11:30 am  
Emerging Technologies Session (CMIT) #2 (Non-CE)

10:00 am–5:45 pm  
SNMMI-TS CE Courses

10:00 am–6:15 pm  
SNMMI CE Courses & Scientific Abstract Presentations

2:00–3:00 pm  
Young Investigators (YIA) and Young Professionals Committee (YPC) Awards Ceremony

3:00–4:30 pm  
“Meet the Author” Poster Session I

3:00–4:30 pm  
Computer and Instrumentation Basic Science Summary Session

3:00–7:00 pm  
Emerging Technologies Session (CMIT) #3 (Non-CE)

6:00 pm–End  
User Meetings

## TUESDAY June 26, 2018

6:00–8:00 am  
User Meetings

8:00 am–4:30 pm  
CT and MRI Case Reviews

8:00 am–4:30 pm  
SNMMI CE Courses & Scientific Abstract Presentations

8:30 am–9:30 am  
Technologist Business Meeting

9:00 am–5:00 pm  
Scientific & Educational Poster Hall

9:30 am–3:00 pm  
Exhibit Hall

10:00 am – 2:00 pm  
SNMMI-TS CE Courses

3:00–4:30 pm  
Scientific Poster Awards

3:00–4:30 pm  
“Meet the Author” Poster Session II

4:45–6:15 pm  
Henry N. Wagner, Jr., MD Highlights Symposium

6:15–6:45 pm  
“On to Anaheim Champagne Toast”

7:15 pm–End  
User Meetings

REGISTER TODAY:

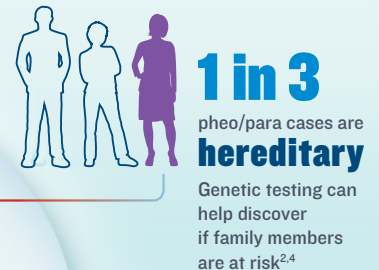
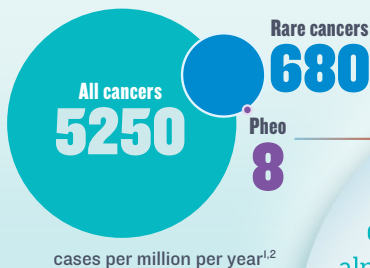
[www.snmmi.org/AM2018](http://www.snmmi.org/AM2018)

# Advancing the fight against pheochromocytoma and paraganglioma begins with understanding the patient perspective

“I had asked my doctor if pheochromocytoma might explain my condition. His response was to laugh and tell me that **this disease was so rare that it almost didn't exist.**” —Allen W.

“The tumors that were affecting my father and me were directly related

to tumors in my great-uncle, my grandfather, two of my father's sisters, and eventually my brother.” —Matthew C.

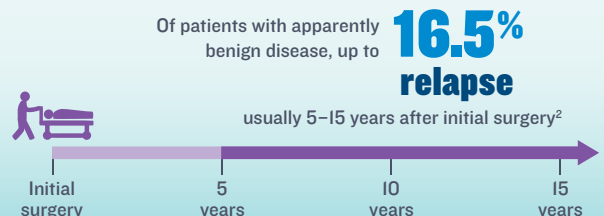


Word cloud containing terms related to the patient experience: SDH mutation, Support adrenalectomy, Rare symptoms, Care team, Tumor future, MIBG, Genetic risk, cancer, anxiety, adrenaline, worry, alpha blocker, Recovery, hope, Life, VHL, Journey, high blood pressure, arrhythmias, Recurrence, Frustrated, catecholamines, Loss, family, cardiomyopathy, pheoversary, laparoscopic surgery, Misdiagnosed, ATTACKS, beta blocker, FIGHT, What to expect?, Heart palpitations, Go zebras, malignant, hypertension, Questions research, Radiation, why?

“I went to see the doctor several times over a period of eight months, and finally he diagnosed me with indigestion. **He wouldn't listen to me or look at the whole picture.**” —Tisa P.

“We are **committed to bringing a new treatment option** to this rare cancer population.”

—Mark Baker, CEO, Progenics

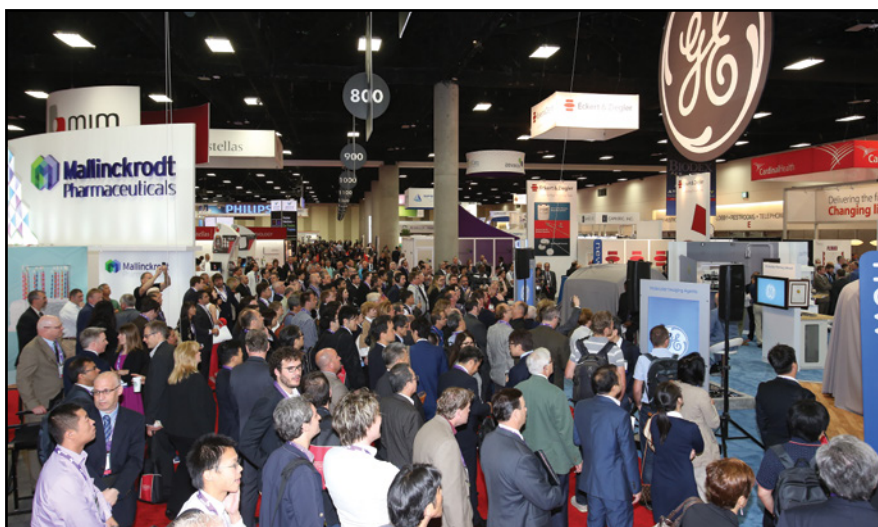


Word cloud was created by aggregating blog posts, social media updates, rare disease message boards comments, and support group advice columns. All patient quotes sourced from PheoParaTroopers.org.

References: 1. American Cancer Society. *Cancer Facts & Figures 2017*. Atlanta, GA: American Cancer Society; 2017. 2. PDQ Adult Treatment Editorial Board. PDQ Pheochromocytoma and Paraganglioma Treatment. <https://www.cancer.gov/types/pheochromocytoma/hp/pheochromocytoma-treatment-pdq>. Updated July 10, 2015. Accessed April 7, 2017. 3. Lenders JW, Eisenhofer G, Mannelli M, Pacak K. Pheochromocytoma. *Lancet*. 2005;366(9486):665–675. 4. Pheochromocytoma and Paraganglioma Research Support Organization. PRESSOR - Pheochromocytoma Research Support Organization Web site. <http://www.pressor.org/facts.php>. Accessed April 7, 2017.

© 2017 Progenics Pharmaceuticals, Inc. All rights reserved. Trademarks are the property of their owners.

# DON'T MISS THESE GREAT OPPORTUNITIES TO Connect With Your Colleagues During the Meeting



## NEW FOR 2018! Saturday Evening Opening Ceremony

Taking place just prior to the Welcome Reception in the Exhibit Hall, you'll get an overview of the meeting, learn about the historic city of Philadelphia and how to get the most out of your visit, hear from this year's highlight country about the latest research and innovations happening in China.

## Exhibit/Poster Hall Opening & Welcome Reception

*Hosted by the SNMMI 2018 Annual Meeting Exhibitors*

SNMMI's Exhibit/Poster Hall is always packed with more than 160 companies representing the latest innovations in nuclear medicine and molecular imaging products and services. In addition, view scientific posters in the Poster Hall representing notable studies and conclusions in this dynamic field of medicine. Network with your colleagues, meet new friends, and gain new knowledge while enjoying hors d'oeuvres and refreshments.

## NEW FOR 2018! "Drink and Think"

These informal gatherings at local pubs and bars will be organized around particular areas of interest. This will give you an opportunity to relax with colleagues and new friends to discuss issues of common interest. The topics and locations will be announced soon!

## Awards Ceremony

This ceremony will feature JNM Editor, Johannes Czernin, MD, presenting an update to his very popular talk—*Imaging with a Purpose*—followed by the presentation of awards for research and development in nuclear medicine and molecular imaging around the world.



# DON'T MISS THESE GREAT OPPORTUNITIES TO Connect With Your Colleagues During the Meeting



## RPSC/CMIIT Poster Hall Mixer

The Radiopharmaceutical Sciences Council (RPSC) and the Center for Molecular Imaging Innovation and Translation (CMIIT) are hosting the Annual Poster Mixer. It's your opportunity to view hundreds of scientific posters, enjoy refreshments, and visit with professional colleagues.

## Poster Awards

At the start of the Tuesday "Meet the Author" poster session, poster finalists (1st, 2nd, and 3rd place winners) for scientific tracks, as well as educational exhibits, will be recognized for their work. Certificates will be presented to each finalist by the Chair of the Scientific Program Committee, and each winning poster will be identified by a prize ribbon affixed to the poster board.

## "Hot Trot 5K" Run/Walk

Exercise your body before you exercise your brain. Sign up for the 4th Annual "Hot Trot 5K" run/walk. Proceeds will benefit the advancement of molecular and nuclear medicine technologists through professional development that promotes clinical excellence and optimal patient outcomes via the SNMMI-TS Professional Development and Education Fund. A portion of the registration proceeds will support the local charity, Bianca's Kids, where their mission is to grant wishes to children in need. Come out, have fun, and support your field. The run will take place on Saturday, June 23rd at 7:00 am.

## NEW FOR 2018! "On to Anaheim" Champagne Toast

Join your colleagues and the SNMMI leadership following the Henry N. Wagner, Jr., MD Highlights Symposium, for a special champagne toast to help kick off the countdown to the SNMMI 2019 Annual Meeting in Anaheim, California!

# CONTINUING EDUCATION SESSIONS

*The SNMMI Annual Meeting offers more than 195 accredited CE and Scientific sessions. Here's just a sample of what's available for you in Philadelphia:*

## Featured Session:

### CE38: Outreach and the SNMMI on the Frontlines of your Nuclear Medicine Practice

Nuclear medicine and molecular imaging tools are at the forefront of clinical care and are used daily. Their value is frequently underestimated due to lack of knowledge or the lack of visibility and clarity of what the field is. Through its new Value Initiative, and a focus on outreach, SNMMI is increasing its efforts to bring the field forward and increase its visibility. A variety of strategies have been put in place. The outreach committee has been an integral piece to make this vision succeed. Numerous partnerships with patient advocacy groups, societies and other key nuclear medicine players have been put in place. The wider nuclear medicine community by gaining knowledge of what is being done can help this vision succeed and be an active participant.

For full descriptions visit:

[www.snmmi.org/AM](http://www.snmmi.org/AM)



## Cardiovascular

### CE89: Opportunities for Collaboration between SNMMI and ASNC

- Explain new applications and advances of radionuclide imaging in cardiac disorders.
- Describe how decisions on Capitol Hill for reimbursement and funding for Nuclear Cardiology procedures impact their practice.
- Discuss evolving training opportunities in Nuclear Cardiology and scientific publications in the JNM and JNC.

### CE42: Cardiovascular Molecular Imaging

- Contrast the strengths and limitations of SPECT and PET tracers for molecular imaging in several clinical diseases and optimize imaging protocols.
- Discuss the potential of molecular imaging for evaluation of arrhythmias with SPECT and PET and the present limitations.
- Explain the pathophysiology of amyloidosis and the application of SPECT or PET imaging for the characterization and management of the disease.
- Describe the role of imaging inflammation for evaluation of device and valve infection.

Additional Cardiovascular sessions include:

CE32: From Atherosclerosis to Heart Failure: the Role of Nuclear Imaging and Artificial Intelligence

CE77: Measurement of Absolute Myocardial Blood Flow - Part 1

## Neurosciences

### CE68: Brain Imaging Read with the Experts (Nuts and Bolts)

- Examine basic principles and imaging methodology of imaging brain disorders with FDG-PET.
- Discuss basic principles and imaging methodology of imaging brain disorders with Amyloid and tau-PET.
- Describe basic principles and imaging methodology of imaging the dopaminergic system in disease.
- Apply these skills by means of interactive case reading.

### CE40: Value of Quantification in Neuroimaging

- Discuss the principles of quantitative and semi-quantitative brain analysis.
- Determine the value of quantitative analysis for improvement of neuroimaging in general.
- Examine the value of quantitative imaging in the field of imaging inflammation.

Additional Neurosciences sessions include:

CE05: Advances in Imaging Proteinopathies Associated with Neurodegeneration

CE82: PET Neuroimaging of Brain Glioma

## Oncology & Therapy

### CE22: PRRT Nuts and Bolts

- Discuss the basic principles of PRRT in NET.
- Examine various approaches of treatments/schema with PRRT.
- Describe utilization and differences of PRRT applications.

### CE55: Targeted PET in Oncology

- Compare the role of targeted imaging for detection versus characterization.
- Discuss the issues related to the role of targeted imaging in predicting patient specific response.
- Consider the interplay between the role of pathology and imaging in terms of characterization and heterogeneity across lesions.

Additional Oncology and Therapy sessions include:

CE01: PET/CT Before, During and After Tumor Ablation

CE08: Theranostics and Bone Targeting Radiopharmaceutical Therapy in Prostate Cancer

## Instrumentation and Data Analysis

### CE58: Motion Correction Strategies in PET

- Identify the impact of respiratory, cardiac, and body motion on PET imaging.
- Describe the current state of hardware and software driven motion correction technologies.
- Discuss the current challenges and new developments of motion management in PET.

### CE72: Quantitative Imaging for Dosimetry in Radionuclide Imaging and Therapy

- Recognize and address problems associated with quantitative imaging and need for strict QC.
- Explain to others different ways of calculating doses and pros and cons of each approach.
- Discuss the benefits of personalized, image-based dosimetry.

Additional Instrumentation and Data Analysis sessions include:

CE09: Crystals to Quantitation to QC: A Field Guide to SPECT and PET Instrumentation

CE30: Advances in Simultaneous PET/MRI Imaging and Clinical Applications



# CONTINUING EDUCATION SESSIONS

*The SNMMI Annual Meeting offers more than 195 accredited CE and Scientific sessions. Here's just a sample of what's available for you in Philadelphia:*

## Featured Session:

### CE13: Training Future Nuclear Medicine Physicians – Strategy

It is an exciting time for the field of Nuclear Medicine and Molecular Imaging. New diagnostic technologies are becoming available for clinical care. New therapeutic applications are expanding our horizon. Research and development are accelerating its pace. In this session, leaders in the field will discuss and brainstorm with the audience how we should train future Nuclear Medicine physicians who will be able advance value-driven patient care, research, and/or education, well equipped with knowledge and skills.

## General Clinical Specialties

### CE24: Quality in Nuclear Medicine Town Hall Session

- Discuss the importance of MOC.
- Implement registries into your practice.
- Integrate various SNMMI quality resources into your practice.

### CE62: The Science (and Art) of Scientific Writing and Publishing

- Identify the characteristics of a strong scientific paper.
- Examine what makes a successful manuscript in the eyes of leading scientists and journal editors.
- Implement best practices for writing and submitting a scientific manuscript.

**Additional General Clinical Specialties sessions include:**

CE41: Spondylodiscitis: Role of Imaging for Diagnosing and Monitoring Treatment Response

CE83: Scintigraphy: Clinical Challenges, AUC and Optimizing Planar Scintigraphy

CE90: Nuclear Medicine Management of Adult and Pediatric Hyperthyroidism

## Pediatrics Track

### CE14: Pediatric Nuclear Medicine

- Discuss the concept of sequence: abnormal activity in a site is not diagnostic, unless origin is determined.
- Describe the value of PET/CT in the assessment of pediatric patients with lymphoma and non-hematological malignancies.
- Describe optimal radiation dose for pediatric patients.
- Analytically distinguish between two renal states with different pathologies.

### CE52: Updates in Pediatric Skeletal Imaging

- Interpret  $^{18}\text{F}$ -NaF PET scans for non-accidental trauma.
- Order the most appropriate imaging test for known or suspected osteomyelitis.
- Compare the capabilities of conventional bone scintigraphy versus PET scan in pediatric bone tumors.

**Additional Pediatrics Track sessions include:**

CE59: Receptor Targeted Radionuclide Therapy for Pediatric Cancers

CE66: Pediatrics Read with the Experts Session

## Molecular Targeting Probes Track

### CE20: Field Notes on the Production of PET Radiotracers

- Describe unique PET production facility scenarios and how to overcome potential pitfall.
- Describe the steps associated with the process of facility inspections.
- Provide real world logistical examples of quality control situations found in PET production facilities.

### CE34: Nuts and Bolts of PSMA Probe Development

- Explore current PSMA imaging probes and data from clinical trials.
- Discuss practical considerations for PSMA agent development.

**Additional Molecular Targeting Probes sessions include:**

CE23: Molecular Imaging in Interventional Radiology and Surgery

CE86: Emerging Molecular Imaging Targets in Neurological Disease

## Career Development / Leadership

### CE35: WINM Navigating a Successful Career

- Learn what resources you need to be successful.
- Learn what questions you should be asking to ensure success.
- Prepare for a transition.

### CE38: Outreach and the SNMMI on the Frontlines of your Nuclear Medicine Practice

- Discuss all outreach efforts put in place by the SNMMI.
- Describe ways to participate in the value initiative and be an active participant in outreach.
- Examine the resources available to the SNMMI members to promote their nuclear medicine practice.
- Learn how SNMMI can help practitioners improve the quality of their nuclear medicine practice.
- Learn how to increase the visibility and power of nuclear medicine practices.

**Additional Career Development/Leadership sessions include:**

CE53: Management and Leadership in Nuclear Medicine and Molecular Imaging - I and II

CE89: Opportunities for Collaboration between SNMMI and ASNC

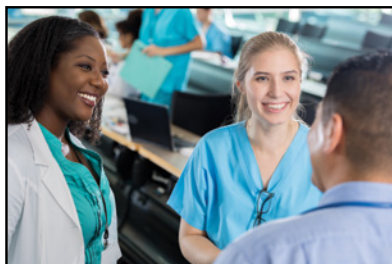


# CONTINUING EDUCATION SESSIONS

*The SNMMI Annual Meeting offers more than 195 accredited CE and Scientific sessions. Here's just a sample of what's available for you in Philadelphia:*

## **Featured Session:** **The Importance of Quality in Nuclear Medicine**

A recent survey of technologists suggested there is disparate level of understanding amongst technologists regarding what the term quality means and how these changes will affect current practice. This session will provide technologist attendees with a detailed overview of how to achieve quality in nuclear medicine, why it is important, and how it can affect overall patient care, treatment and outcomes. The session will review the basic principles related to the topic or quality, including definitions of quality, quality improvement quality assurance and quality outcomes. In addition sessions will focus on institutional and individual considerations that may affect quality, the role of accreditation in quality and the use of data to drive change and improve overall quality outcomes.



## **Anatomic Imaging**

### **CE31: Basic Anatomy and Imaging Parameters for CT/MR in the Role of Fusion Imaging**

- Recognize anatomy and common pathology seen in fusion imaging studies.
- Determine imaging parameters best suited for the facilities fusion imaging scanners.
- Interpret fusing imaging studies with more confidence.

### **CE63: Best Clinical Practice: Head and Neck & PET/CT Chest**

- Examine the new AJCC staging system (8th edition) for head and neck and lung cancer using PET/CT
- Discuss the value of PET/CT in head and neck and chest tumors and other pathological conditions
- Recognize pitfalls in interpretation of head and neck and chest PET/CT

#### **Additional Anatomic Imaging sessions include:**

**CE64: Case Review (Cases 1-13)**  
**CE71: Case Review (Cases 14-25)**  
**CE78: Case Review (Cases 26-38)**  
**CE85: Case Review (Cases 39-50)**

## **Technologist Focused Sessions**

### **TS09: PET/MR for the Technologist**

- Discuss the value that Nuclear Medicine Technologists add to providing great quality images for Nuclear Medicine Physicians when reviewing PET/MR oncology images.
- Identify the different options for motion correction in PET/MR.
- Discuss the importance of patient preparation prior to cardiac PET/MR studies.

### **TS14: Coding Update 2018 and Beyond**

- Discuss the new hospital and physician fee schedule Medicare policy changes to be effective January 1, 2018.
- Update Charge Masters and appropriately apply the new payment policies or coding principles for the new 2018 CPT and HCPCS Level II and policy codes discussed.
- Take steps to ensure a smooth transition, use resources as necessary, for the new policies and codes in 2018.

### **TS20: Molecular Imaging in a Big Picture**

- Detect the incidentally detected cardiac lesions and get a guideline to further manage the patients with incidentally detected cardiac lesions.
- Describe the issues in introducing PET/MR into an existing workflow with PET-CT and the difference in requirements and roles of technologists who perform PET/MR.
- Demonstrate how we can use PET and molecular imaging to establish a molecular staging system and to demonstrate how PET molecular imaging can conceptually give immediate information on response to therapy.

### **TS25: Not Your Every Day Radiation Safety Lectures**

- Explain why there are committees who advise the Nuclear Regulatory Commission when the Commission makes their own decision.
- Interpret radioactive material licenses and what they actually say about what and how much radioisotopes are allowed at a location and why it matters.
- Manage the changes in a radioactive materials license and why communication with your nuclear pharmacy is imperative for both you and them.

### **TS29: Pediatric Imaging What Aren't You Doing**

- Review basics of imaging the pediatric patient.
- Review common imaging studies performed in children and potential opportunities to increase pediatric imaging.
- Discuss strategies for optimizing imaging and imaging protocols for children.

#### **Additional sessions include:**

**TS13: Neurology Imaging in Nuclear Medicine and PET I**  
**TS18: PET 2.0: How the Experts practice Molecular Imaging in the 21st Century!**  
**TS24: Women in Nuclear Medicine**  
**TS33: Our Idiots Guide to Getting Published**

**PHILADELPHIA, PA  
JUNE 23, 2018**

THEREOF LEV. XXVX PROCLAIM LIBERTY  
HOUSE IN PHILAD<sup>A</sup> BY ORDER OF THE ASSEMBLY

PASS AND STOW  
PHILAD<sup>A</sup>  
MDCCLIII

**HOT  
TROT 5K**

Sign up for the 4<sup>th</sup> Annual "Hot Trot 5K" run/walk. Proceeds will benefit the advancement of molecular and nuclear medicine technologists through professional development that promotes clinical excellence and optimal patient outcomes via the SNMMI-TS Professional Development and Education Fund. A portion of the registration proceeds will support Bianca's Kids, a local Philadelphia charity that grants wishes to children in need. Come out, have fun, and support your field.

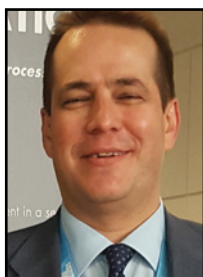
**[www.snmmi.org/HotTrot5k](http://www.snmmi.org/HotTrot5k)**

**Saturday, June 23 > 7:00 am > Philadelphia, PA**



# WHY ARE YOU EXCITED TO ATTEND This Year's Annual Meeting?

"I have attended Annual Meeting since 1991 and for me it's the best moment of the year. It's a great opportunity to contact with colleagues of other countries. I would like to know all improvements of Theranostics, neurodegenerative disorders and prostate cancer. Also all news of industry developments."



Antonio Maldonado  
Head of Nuclear Medicine Department. Quironsalud Madrid University Hospital  
Madrid, Spain

"I joined Cancer Targeted Technology in 2017, as Director of our radiotherapeutic and diagnostic programs targeting PSMA expressing cancers. I'm excited to hear the up and coming research in this field, including the presentation on CTT's therapeutic, CTT1403, and to meet many of the key scientists in this area."



Hillarie Plessner Windish, PhD  
Director, Oncology Programs, Cancer Targeted Technology  
Woodinville, WA, USA

"I'm always interested in learning what's new in the field and excited to see friends and colleagues again! The educational sessions are great, but my favorite part is to spend time with friends that I have made over the years within the profession."



David Gilmore, MS, CNMT, RT(R)(N), FSNMMI-TS  
Chair & Assistant Professor, Medical Imaging  
Program Director, Nuclear Medicine  
Weston, MA

Highlighting this year's host city of Philadelphia. In this issue of the Annual Meeting Preview Magazine, learn more about:

# Rittenhouse Square\*



Home to high-end shops and fancy French restaurants, this district may be ritzy but it's far from pretentious.

1. Get the flavor of a chic Parisian brasserie right here in Center City at **Parc Restaurant**. Complete with al fresco seating right on Rittenhouse Square, Parc offers a charming and comfortable dining experience any time of the day for any occasion.
2. **Philadelphia is the birthplace of American medicine and home of the country's finest collection of medical artifacts housed at The Mütter Museum. Not for the squeamish, the museum features anatomical specimens, models and medical instruments displayed in a Victorian "cabinet museum" setting.**
3. Hidden on a side street, **The Rosenbach Museum** holds the private collection of the Rosenbach brothers, noted rare book dealers. Among the treasures inside: the only surviving copy of Benjamin Franklin's first Poor Richard's Almanack; the manuscript of James Joyce's Ulysses; the papers of poet Marianne Moore; Bram Stoker's notes for Dracula; and, for your wild things (aka kids), original drawings by Maurice Sendak.
4. Rittenhouse Square, with its European-style plaza and fountains, is the perfect place to hang out and sip a latte in peace. **The Curtis Institute**, located on the park, is one of the most respected music schools in the U.S. and offers free concerts by students.
5. **Walnut Street** is home to many chic boutiques. Take advantage of tax-free purchasing power on shoes and clothing or simply peruse the many architecturally stunning shops, such as Philadelphia-based women's clothiers Anthropologie (housed in the historic Fell-Van Rensselaer mansion) or the elegant marble staircases at Boyds, which also stocks top brands such as Armani, Burberry and Cole Haan.
6. The section of Broad Street running south from City Hall is known locally as **The Avenue of the Arts**. Take in a show at the Academy of Music or the Kimmel Center for the Performing Arts.

\*content and descriptions provided by [www.discoverPHL.com](http://www.discoverPHL.com)

# THE SNMMI 2018 EXHIBIT HALL

Providing leaders in the profession with direct access to more than 160 of the top industry suppliers - that's the mission of the SNMMI Annual Meeting Exhibit Hall. Explore the latest technologies, witness ground-breaking new products and services, and connect with the companies that make it happen.

Absolute Imaging Solutions  
 ABT Molecular Imaging, Inc.  
 ABX advanced biochemical compounds  
 ABX-CRO advanced pharmaceutical services  
 Actinium Pharmaceuticals  
 Advanced Accelerator Applications  
 Advanced Cyclotron Systems, Inc.  
 AirNet II, LLC  
 Alzheimer's Association  
 American Board of Nuclear Medicine (ABNM)  
 American College of Nuclear Medicine (ACNM)  
 American College of Radiology (ACR)  
 American Society of Nuclear Cardiology (ASNC)  
 AMICI, Inc.  
 AnazaoHealth Corporation  
 ANMI SA  
 ARRT, The American Registry of Radiologic Technologists  
 Association of Imaging Producers & Equipment Suppliers (AIPES)  
 Astellas Pharma US  
 Australian and New Zealand Society of Nuclear Medicine (ANZSNM)  
 Bayer - Oncology  
 Bayer - Radiology  
 BC Technical, Inc.  
 Becquerel & Sievert Co., Ltd  
 Berthold Technologies

Best Cyclotron Systems, Inc.  
 Biodex Medical Systems, Inc.  
 Blue Earth Diagnostics, Inc.  
 Board of Pharmacy Specialties (BPS)  
 Bracco Diagnostics  
 Brain Biosciences, Inc.  
 Bruker BioSpin  
 Cambridge Isotope Laboratories Inc.  
 Canadian Association of Nuclear Medicine (CANM)  
 Canon Medical Systems USA, Inc.  
 Capintec, Inc.  
 Cardinal Health  
 Cardiovascular Imaging Technologies, LLC  
 Center of Molecular Research  
 Certus International, Inc.  
 CHEMATECH  
 China Isotope & Radiation Corporation (CIRC)  
 Chinese Society of Nuclear Medicine  
 CMR Naviscan Corporation  
 Comecer Group  
 Curium  
 Cyclomedica Australia PTY LTD  
 Cyclomedical International, Inc.  
 Data Spectrum Corporation  
 Digirad  
 DOSIsoft

ec<sup>2</sup> Software Solutions  
 Eckert & Ziegler Isotope  
 Eckert & Ziegler Radiopharma  
 Elysia-Raytest  
 EPIC Crystal Co., Ltd.  
 European Association of Nuclear Medicine (EANM)  
 GE Healthcare  
 Hake Medical Technology (Beijing) Co. Ltd.  
 Hermes Medical Solutions, Inc.  
 Hidex Oy  
 Host Country Lounge  
 Huayi Isotopes Company  
 IBA S.A.  
 ImaginAb, Inc.  
 Inter Medical  
 Medizintechnik GmbH  
 Intersocietal Accreditation Commission (IAC)  
 INVIA Medical Imaging Solutions  
 Invicro  
 Ionetix Corporation  
 IQ Medical Services  
 ISOFLEX USA  
 isoSolutions Marketing & Management Inc.  
 Iso-Tex Diagnostics, Inc.  
 IsoTherapeutics Group, LLC  
 ITM Isotopen Technologien München AG  
 Japanese Society of Nuclear Medicine  
 Jubilant DraxImage

LabLogic Systems Limited  
 Lantheus Medical Imaging, Inc.  
 LikeMinds  
 Lucerno Dynamics, LLC  
 Lung Cancer Alliance  
 Macrocyclics  
 MarShield  
 MedImage, Inc.  
 Mediso Medical Imaging Systems Ltd.  
 MedTrace  
 Men's Health Network  
 MiE America Inc.  
 MLLabs  
 MIM Software Inc.  
 Mirada Medical  
 MOLECUBES NV  
 Molecular Targeting Technologies, Inc.  
 MR Solutions Ltd.  
 MultiFunctional Imaging LLC  
 NorCal CarcinNET Community  
 North American Neuroendocrine Tumor Society (NANETS)  
 NorthStar Medical Radioisotopes, LLC  
 Nuclear Diagnostic Products, Inc.  
 Nuclear Imaging Services, LLC  
 Nuclear Medicine Technology Certification Board (NMTCB)  
 Nuclear Shields B.V.



# THE SNMMI 2018 EXHIBIT HALL

NUCMEDCOR

Numa Inc.

Oncidium Foundation

ORA - NEPTIS

PerkinElmer

PETNET Solutions

Pharmalucence

Philips

Pinestar Technology, Inc.

Piramal Imaging

PMOD Technologies LLC

Prescient Imaging LLC.

Progenics Pharmaceuticals, Inc.

Radiation Shielding Inc.

RadioMedix INC

RadSite

Rotem Industries

Scintomics GmbH

SEDECAL Molecular Imaging

Segami Corporation

Siemens Healthineers

SNMMI

SNMMI Development Booth

SOFIE

Southern Scientific

Southwestern Imaging Systems & Service (SWISS)

Spectrum Dynamics Medical, Inc.

Spectrum Pharmaceuticals, Inc.

Springer

Sumitomo Heavy Industries, Ltd.

Susan G. Komen Philadelphia

SynterMed, Inc.

Synthra GmbH

T&D Tungsten Manufacturing Inc.

Taiyo Nippon Sanso Corporation

Tema Sinergie S.P.A.

The Education and Research Foundation for Nuclear Medicine and Molecular Imaging (ERF)

The Korean Society of Nuclear Medicine

Theragnostics, Inc.

Thinking Systems Corporation

ThyCa: Thyroid Cancer Survivors' Association, Inc.

TransLite, LLC

Trasis

Triad Isotopes, Inc.

Tru-Motion Products

UltraSPECT Inc.

UPPI, LLC

US DOE Isotopes

Von Gahlen International, Inc.

Waters Corporation

Wolfmet

Wolters Kluwer

WomenHeart

World Molecular Imaging Society (WMIS)

Yantai Dongcheng Biochemicals Co., Ltd.

*Current Exhibitors  
(as of March 20, 2018)*

## EXHIBIT HALL EVENTS

### Exhibit/Poster Hall Opening & Welcome Reception— Saturday, June 23 | 6:00–8:00 pm

Hosted by the SNMMI 2018 Annual Meeting Exhibitors

SNMMI's Exhibit/Poster Hall is always packed with more than 160 companies representing the latest innovations in nuclear medicine and molecular imaging products and services. In addition, view scientific posters in the Poster Hall representing notable studies and conclusions in this dynamic field of medicine. Network with your colleagues, meet new friends, and gain new knowledge in the SNMMI Booth while enjoying hors d'oeuvres and refreshments. Please stop by and thank exhibiting companies for their generous support of the SNMMI 2018 Annual Meeting.

*The Exhibit/Poster Hall will be open from Saturday evening to Tuesday afternoon during the SNMMI Annual Meeting.*

### New for 2018! Interactive Training Showcase

*No CE credit will be available for these training sessions.*

Take advantage of the inaugural training showcase theater on the Exhibit Hall floor. Thirty minute, interactive training sessions on a variety of topics will take place on Sunday and Monday. View training sessions from the following companies:

- Advanced Accelerator Applications
- GE Healthcare
- Blue Earth Diagnostics
- Jubilant DraxImage
- Cardinal Health
- Lucerno Dynamics
- Digirad
- Siemens Healthineers

### Hot Spot Cash Drawings!

Up to 20 exhibitors will designate their booth as a "Hot Spot." Attendees will have 6 chances to win a \$300 CASH drawing by being in the right booth at the right time. There will be 2 drawings each day during Dedicated Exhibit Hall Hours. Show Management will call out the hot spot company name and booth number. Any attendees standing in that booth when the company name is called will be eligible to win the \$300 cash prize.

# Add These Great Tools To Your Annual Meeting Registration and Continue Learning All Year Long!



Get instant access to top research presentations from the 2018 Annual Meeting.

- Browse by session, topic, and country
- 24/7 online, anywhere access



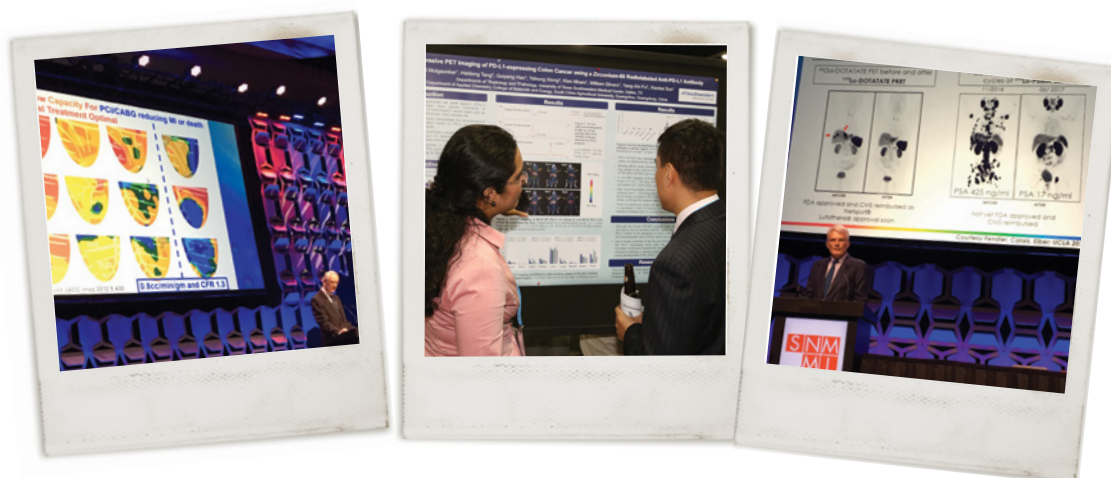
Featuring 100 sessions from SNMMI's 2018 Annual Meeting.

- CME, ACPE and VOICE credit available for select sessions that qualify
- Optional USB Drive for Offline, Anywhere Access

## Add a package to your SNMMI Annual Meeting Registration:

Full Virtual Package (recommended): SNMMI Virtual Meeting Access & USB, plus Virtual Poster Hall Access	\$368 (\$538 post-meeting) <b>\$170 savings</b>
SNMMI Virtual Meeting Access, plus Virtual Poster Hall Access	\$268 (\$438 post-meeting)
SNMMI Virtual Meeting Access & USB	\$319 (\$439 post-meeting)
SNMMI Virtual Meeting Online Access Only	\$219 (\$339 post-meeting)

**[www.snmmi.org/VirtualProducts](http://www.snmmi.org/VirtualProducts)**



# Consider Your Choices

## RUBY-FILL® Rubidium (Rb 82) Generator

### You Now Have More Options When it Comes to Cardiac PET Imaging

#### RUBY-FILL Generators and Elution Systems are backed by:

- 7 years of proven clinical experience
- Over 35,000 patients imaged world-wide
- A robust U.S. distribution channel
- Experienced clinical applications and service support

RUBY-FILL is available today to meet your unique cardiac PET imaging needs. With advanced features and user-friendly technology, RUBY-FILL will enable you to obtain accurate, high-quality imaging studies so you can make confident patient management decisions reliably and efficiently.

#### Experience the RUBY-FILL Rubidium (Rb 82) Generators and Ruby Elution System Difference TODAY!

- Automated quality control for lab efficiency
- Engineered for user confidence and efficiency with a 30 liter volume and a long 60-day shelf life
- Accurate patient specific infusion options including constant-activity and weight-based dosing
- Built-in safety controls to protect staff and patients

**Contact your local sales representative to discuss business solutions tailored to YOUR needs or for more information visit [www.draximage.com](http://www.draximage.com)**

#### Important Safety Information

##### Indication

RUBY-FILL® Rubidium Rb 82 Generator is a closed system used to produce rubidium Rb 82 chloride injection for intravenous use. Rubidium Rb 82 chloride injection is a radioactive diagnostic agent indicated for Positron Emission Tomography (PET) imaging of the myocardium under rest or pharmacologic stress conditions to evaluate regional myocardial perfusion in adult patients with suspected or existing coronary artery disease.

#### **WARNING: UNINTENDED STRONTIUM 82 (Sr 82) AND STRONTIUM 85 (Sr 85) RADIATION EXPOSURE**

Please see full prescribing information for complete boxed warning.

Unintended radiation exposure occurs when the levels of Sr 82 or Sr 85 in the Rubidium Rb 82 chloride injection exceed specific limits.

Perform generator eluate tests:

1. Determine Rb 82, Sr 82, Sr 85 levels in the eluate:
  - Once daily, prior to any drug administration, and
  - With additional daily tests after detection of an Alert Limit.
2. Stop use of the generator at its Expiration Limit.



**RUBY-FILL®**  
RUBIDIUM Rb82 GENERATOR

You are encouraged to report negative side effects of prescription drugs to the FDA. Visit MedWatch or call 1-800-FDA-1088. RUBY-FILL® is a registered trademark used under license by Jubilant DraxImage, Inc.

Jubilant DraxImage Inc.  
16751 Trans-Canada Highway, Kirkland, Quebec, Canada H9H 4J4  
Phone: 1.888.633.5343 / 514.630.7080 Fax: 1.866.431.4288 / 514.694.3865  
[www.draximage.com](http://www.draximage.com)  
2017CARD081





# REGISTRATION

## REGULAR MEETING REGISTRATION<sup>†</sup> (Saturday – Tuesday)

Registration Type	Early-Bird Registration Rates (on/before April 19, 2018)		Pre-Reg Registration Rates (on/before June 21, 2018)		Onsite Registration Rates (beginning June 22)	
	Member	Nonmember	Member	Nonmember	Member	Nonmember
Physician	\$665	\$1,145	\$780	\$1,290	\$890	\$1,400
Scientist	\$665	\$1,145	\$780	\$1,290	\$890	\$1,400
Industry	\$665	\$1,145	\$780	\$1,290	\$890	\$1,400
Technologist	\$390	\$655	\$450	\$705	\$550	\$805
Laboratory Professional*	\$420	\$685	\$485	\$795	\$595	\$905
Emeritus-Physician/Scientist	\$315	n/a	\$350	n/a	\$460	n/a
Emeritus-Technologist	\$195	n/a	\$215	n/a	\$315	n/a
Resident/Scientist In-Training**	\$205	\$330	\$230	\$380	\$340	\$490
Technologist Student**	No Charge	\$75	No Charge	\$105	No Charge	\$205
Medical Student**	No Charge		No Charge		No Charge	
Companion/Guest (16 yrs or older)		\$50		\$50		\$50

\*Laboratory Professionals must provide written verification.

\*\*Residents and Students (Intern, Scientist In-Training, Medical/Graduate/Technologist Student) must provide written verification on official letterhead signed by Program Director, or Advisor. Technologist Student, Resident In-Training, and Medical Student fees do not include CE Credit. Residents-In-Transition do receive CE Credit.

† Regular Registration does not include categoricals or specialty workshops. These events require an additional fee. Weekend registration includes a categorical course with the exception of technologists/technologist students who will receive additional CE course credit beginning Saturday.

### Pre-Meeting Categorical Seminars — (Requires an additional fee unless you are a weekend attendee)

Saturday, June 23, 2018

Member Fee: \$150 | Nonmember Fee: \$200

### Specialty Workshops

#### • **New! Fluciclovine Live Training Session**

Saturday, June 23, 2018

Registration is complimentary, but separate from your Annual Meeting registration. Please note, space is limited to the first 100 registrants. No CE credit will be available for this session.

#### • **The Nuclear Medicine Review Course**

Saturday–Sunday, June 23–24, 2018

Member Fee: \$200

Nonmember Fee: \$300

#### • **The Student Technologist Registry Review and Mock Exam**

Saturday–Sunday, June 23–24, 2018

Fee: \$50



### More Reasons to Become a SNMMI Member

In addition to the obvious registration discounts available for SNMMI members, attending the Annual Meeting will give you a tangible glimpse into the importance and power of belonging to your professional association. Visit [www.snmmi.org/join](http://www.snmmi.org/join) to become a member today!

# XENON Xe 133 Gas



- Lantheus Medical Imaging is the leading U.S. manufacturer of Xenon-133
- Lantheus secures Xenon-133 supply beyond 2016 with the Institute for Radioelements (IRE)<sup>1</sup>
- Lantheus completed our first commercial shipment of Xenon-133 supplied by Institute for Radioelements (IRE)<sup>2</sup>
- Calidose™ Dispenser System is specifically designed and FDA approved for use with Lantheus Medical Imaging Xenon-133<sup>3</sup>

**To order, contact your local commercial radiopharmacy  
or Lantheus Nuclear Products Sales Representative  
or call:**

**Customer Service  
1-800-299-3431**

Monday – Friday  
7:30 AM – 6:00 PM EST

**TechneLite®**  
Technetium Tc 99m  
Generator

Visit  
**TechneLite.com**  
to learn more  
about LEU TechneLite®

Celebrating more than  
**50**  
fifty years of manufacturing  
Technetium Tc 99m Generators

- Contains ≥95% Mo-99 derived from Low Enriched Uranium (LEU)<sup>4</sup>
- Meets CMS criteria for LEU dose Q-code “add on” for HOPPS patient reimbursement<sup>5</sup>
- 100% Assay and Mo-99 breakthrough testing<sup>4</sup>
- 100% terminal sterilization<sup>4</sup>
- 99% on-time delivery<sup>4</sup>



**To order, contact your  
Lantheus Nuclear Products Sales Representative  
or call:**

**Customer Service  
1-800-299-3431**

Monday – Friday  
7:30 AM – 6:00 PM EST

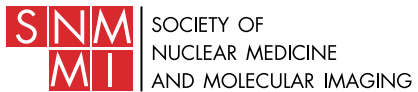
**Brands you know. Quality you trust.**  
**www.lantheus.com**

#### REFERENCES

1. Lantheus Medical Imaging Press Release, Lantheus Medical Imaging Announces XENON-133 Supply Agreement with Institute for Radioelements, 2015; <http://phx.corporate-ir.net/ExternalFile?item=UGfyZW50SUQ9MjY3NTExENoaWxkSUQ9LTf8VHlwZT02&t=1>
2. Lantheus Medical Imaging Press Release: Lantheus Holdings Announces First Commercial Shipment of Xenon 133 Supplied by Institute for Radioelements (IRE), 2016; [investor.lantheus.com/phoenix.zhtml?c=241435&p=irol-newsArticle&ID=2181138](http://investor.lantheus.com/phoenix.zhtml?c=241435&p=irol-newsArticle&ID=2181138)
3. Xenon Xe-133 Gas (package insert), N. Billerica, MA; Lantheus Medical Imaging, Inc; 2016
4. Quality Data on File: Lantheus Medical Imaging, Inc.
5. Federal Register / Vol. 78, No. 237 / Tuesday, December 10, 2013 p. 75002



Technelite and corporate logo are registered trademarks of Lantheus Medical Imaging, Inc.  
Calidose is a trademark of Lantheus Medical Imaging.  
© 2018 Lantheus Medical Imaging, Inc. All rights reserved. JNMAd-0118 January 2018



**1850 Samuel Morse Drive  
Reston, VA 20190-5316**

*Imaging the Future of Human Health*

**JOIN YOUR COLLEAGUES AND  
MAKE HISTORY IN PHILADELPHIA!**

**REGISTER NOW**

**[www.snmmti.org/am2018](http://www.snmmti.org/am2018)**