



SOCIETY OF
NUCLEAR MEDICINE
AND MOLECULAR IMAGING

ANNUAL MEETING



SNMMI ANNUAL MEETING

June 23 – 26, 2018 > Philadelphia, PA > www.snmmi.org/AM2018

IN THIS ISSUE

Preview “Nuts and Bolts” Sessions

Giving you practical information you can use immediately when you return to the clinic.

Condensed Meeting Timeline

From five to four days to help reduce your time away from work.

Philly Photo Ops

Grab your selfie at these iconic landmarks. And of course, remember to tag SNMMI in the photos too: **#SNMMI18**

Preview Magazine > Issue 1

RUBY-FILL® (Rubidium Rb 82 Generator)
and RUBY Rubidium Elution System

Elution Evolution

Advancing cardiac PET imaging to be:

Precise

Constant-activity infusion option
Maintains consistent activity rate profiles
throughout the life cycle of the generator¹⁻³

Flexible

Accurate patient-specific dosing
Long shelf life—60 days

Efficient

Automated daily quality control
Built-in safety controls



Leap forward with RUBY-FILL®

Indication and Important Safety Information

RUBY-FILL® Rubidium Rb 82 Generator is a closed system used to produce rubidium Rb 82 chloride injection for intravenous use. Rubidium Rb 82 chloride injection is a radioactive diagnostic agent indicated for Positron Emission Tomography (PET) imaging of the myocardium under rest or pharmacologic stress conditions to evaluate regional myocardial perfusion in adult patients with suspected or existing coronary artery disease.

WARNING: UNINTENDED STRONTIUM-82 (Sr-82) AND STRONTIUM-85 (Sr-85) RADIATION EXPOSURE

Please see full prescribing information for complete boxed warning

- Unintended radiation exposure occurs when the levels of Sr-82 or Sr-85 in the rubidium Rb 82 chloride injection exceed specific limits.
- Perform generator eluate tests:
 - 1) Determine Rb-82, Sr-82, Sr-85 levels in the eluate:
 - Once daily, prior to any drug administration, and
 - With additional daily tests after detection of an Alert Limit.
 - 2) Stop use of the generator at its Expiration Limit.

You are encouraged to report negative side effects of prescription drugs to the FDA. Visit www.fda.gov/safety/medwatch, or call 1-800-FDA-1088.

References: 1. Epstein JN, Ziadi MC, Benelfassi A, Beanlands RS, deKemp RA. An 82Rb infusion system for quantitative perfusion imaging with 3D PET. *Appl Radiat Isot.* 2004;60(6):921-927. 2. Klein R, Adler A, Beanlands RS, deKemp RA. Precision-controlled elution of a 82Sr/82Rb generator for cardiac perfusion imaging with positron emission tomography. *Phys Med Biol.* 2007;52(3):659-673. 3. Klein R, Renaud JM, Ziadi MC, et al. Intra- and inter-operator repeatability of myocardial blood flow and myocardial flow reserve measurements using rubidium-82 pet and a highly automated analysis program. *J Nucl Cardiol.* 2010;17(4): 600-616.

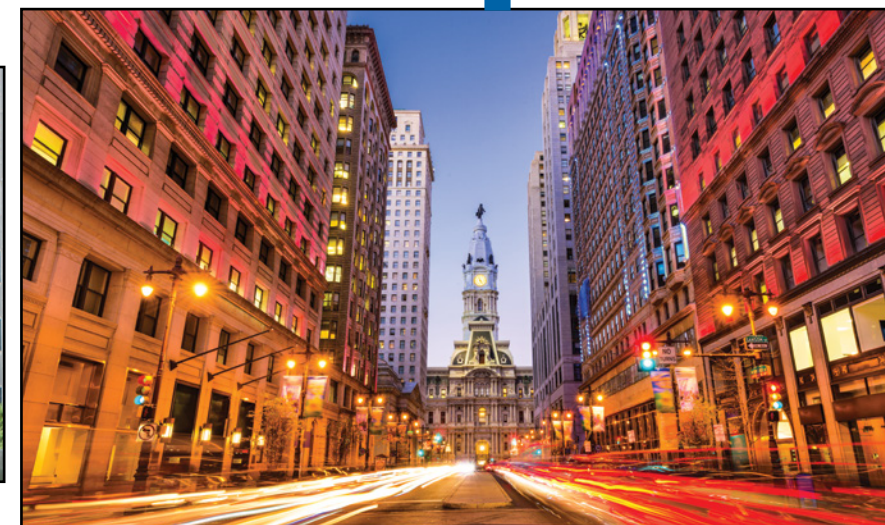
RUBY RUBIDIUM ELUTION SYSTEM

The risk information provided here is not comprehensive.
Please see full Prescribing Information at www.draximage.com.

RUBY-FILL® is a registered trademark used under license by Jubilant DraxImage, Inc.

RUBY FILL®
RUBIDIUM Rb82 GENERATOR

MAKING HISTORY in Philadelphia



It is my distinct honor to invite you to attend the Society of Nuclear Medicine and Molecular Imaging's 2018 Annual Meeting, June 23-26 in Philadelphia, Pennsylvania.

It's no secret that the SNMMI Annual Meeting is well-known as the profession's premier educational, scientific, and networking event.

Even so, we're always looking for ways to improve your meeting experience.

I encourage you to check out page 4 of this magazine for a snapshot of some new features for 2018.

Many of these new additions have been added thanks to your feedback, including "Nuts and Bolts" sessions in a wide variety of subspecialty areas – giving you practical information that you can use immediately when you return to the clinic, and a new roommate sharing program to help you manage the cost of attending, as well as offering you an additional opportunity to connect with other attendees.

So, make your plans to join your colleagues—more than five thousand of the best and brightest in our profession—for four days filled with learning, science, and fun.



I look forward to seeing each of you this June in Philadelphia, the city of brotherly love, a city of medical firsts, and city with some of the best cheesesteaks you can find – as we lead the charge to **Imaging the Future of Human Health.**

Bennett S. Greenspan, MD, FACNM, FACR
President, SNMMI



Jubilant DraxImage Inc.
16751 Trans-Canada Highway, Kirkland, Québec, Canada H9H 4J4
Phone: 1.888.633.5343 / 514.630.7080 Fax: 1.866.431.4288 / 514.694.3865
www.draximage.com
DRAXIMAGE® is a registered trademark of Jubilant DraxImage Inc. 2017CARD066

NEW FOR 2018! SNMMI is excited to unveil some great new and enhanced features for the 2018 Annual Meeting, including:

Saturday Evening Opening Ceremony

Taking place just prior to the Welcome Reception in the Exhibit Hall, you'll get an overview of the meeting, learn about the historic city of Philadelphia and how to get the most out of your visit, and hear from this year's host country about the latest research and innovations happening in China.

Minimize Your Time Away From Work

Based on your feedback, SNMMI has condensed the 2018 meeting from five to four days to help reduce your time away from your job. The same great content will be available, beginning on Saturday, June 23 through Tuesday, June 26.

Implement What You Learn

Addressing your needs, SNMMI will introduce "Nuts and Bolts" sessions in a wide variety of subspecialty areas—giving you practical information that you can use immediately when you return to work.

Roommate Sharing Program to Save on Travel Expenses

SNMMI is pleased to introduce its roommate sharing program designed to assist those with limited travel budgets. Register yourself as a roommate or view those already signed up looking for roommates.

An Interactive Training Showcase

Take advantage of the inaugural training showcase theater on the Exhibit Hall floor. Thirty minute, interactive training sessions on a variety of topics will take place on Sunday and Monday. View training sessions from the following companies:

- Advanced Accelerator Applications
- GE Healthcare
- Blue Earth Diagnostics
- Jubilant DraxImage
- Cardinal Health
- Lucerno Dynamics
- Digirad
- Siemens Healthineers

Just Added! Fluciclovine Live Training Session

Learn from the experts how to read Fluciclovine F18 scans in biochemical recurrent prostate cancer patients. Register now to join us at the SNMMI 2018 Annual Meeting for this 3-hour, hands-on, case review training session. Don't miss out this great opportunity to learn how to accurately interpret the newly approved agent, Fluciclovine F18.

Please note: registration is complimentary, but separate from your Annual Meeting registration. Space is limited to the first 100 registrants.

Highlight Country – China

SNMMI is excited to welcome China as our 2018 "Highlight Country." The Chinese Society will showcase the culture and food of China in the Highlight Country Lounge during the Welcome Reception. They have also organized continuing education sessions, and will present a record number of oral and poster presentations during the meeting. Look for the Highlight Country floor stickers when visiting the Poster Hall to learn more about the great research that is being done there.



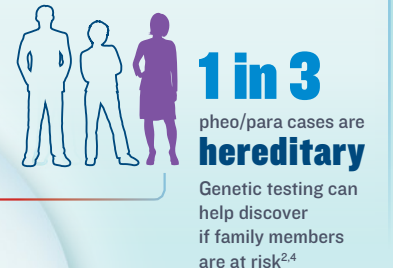
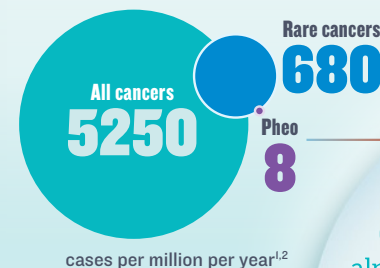
Progenics
Pharmaceuticals®
Find Fight and Follow™

Advancing the fight against pheochromocytoma and paraganglioma begins with understanding the patient perspective

"I had asked my doctor if pheochromocytoma might explain my condition. His response was to laugh and tell me that **this disease was so rare that it almost didn't exist.**" —Allen W.

"The tumors that were affecting my father and me were directly related

to tumors in my great-uncle, my grandfather, two of my father's sisters, and eventually my brother." —Matthew C.

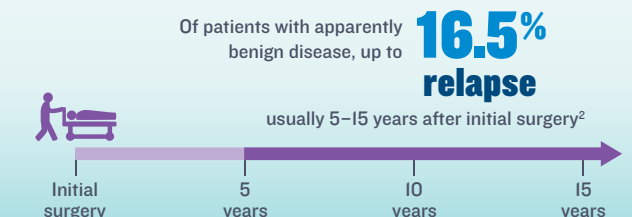


SDH mutation
Support adrenalectomy
Rare symptoms Care team
Tumor future MIBG Genetic risk
cancer anxiety adrenaline worry
alpha blocker Recovery hope Life VHL Journey
high blood pressure arrhythmias Recurrence
Frustrated Loss family cardiomyopathy
catecholamines pheoversary laparoscopic surgery
Misdiagnosed ATTACKS beta blocker FIGHT
What to expect? Heart palpitations
Go zebras malignant hypertension
Questions Radiation why?
research

"I went to see the doctor several times over a period of eight months, and finally he diagnosed me with indigestion. **He wouldn't listen to me or look at the whole picture.**" —Tisa P.



"We are **committed to bringing a new treatment option** to this rare cancer population." —Mark Baker, CEO, Progenics



Word cloud was created by aggregating blog posts, social media updates, rare disease message boards comments, and support group advice columns. All patient quotes sourced from PheoParaTroopers.org.

References: 1. American Cancer Society. *Cancer Facts & Figures 2017*. Atlanta, GA: American Cancer Society; 2017. 2. PDQ Adult Treatment Editorial Board. PDQ Pheochromocytoma and Paraganglioma Treatment. <https://www.cancer.gov/types/pheochromocytoma/hp/pheochromocytoma-treatment-pdq>. Updated July 10, 2015. Accessed April 7, 2017. 3. Lenders JW, Eisenhofer G, Mannelli M, Pacak K. Pheochromocytoma. *Lancet*. 2005;366(9486):665–675. 4. Pheochromocytoma and Paraganglioma Research Support Organization. PRESSOR - Pheochromocytoma Research Support Organization Web site. <http://www.pressor.org/facts.php>. Accessed April 7, 2017.

© 2017 Progenics Pharmaceuticals, Inc. All rights reserved. Trademarks are the property of their owners.

Learn more about highlight country programming: www.snmmi.org/China

MAKE THE BUSINESS CASE TO ATTEND!

Proving a return on investment is key, not only justifying the money it costs to attend the meeting, but that your time spent in Philadelphia will benefit you professionally, and benefit your organization moving forward.



Implement What You Learn

New for 2018! In response to attendee feedback, SNMMI 2018 will introduce “Nuts and Bolts” sessions in a wide variety of subspecialty areas – giving you practical information that you can use immediately when you return to the clinic. See page 10 for a sneak peek into some nuts and bolts sessions.



Save on Travel Expenses

New for 2018! SNMMI is pleased to introduce its roommate sharing program designed to assist those with limited travel budgets. Register yourself as a roommate or view those already signed up looking for roommates.



Be Among the First to See New Products and Technologies

The SNMMI 2018 exhibiting companies are the trendsetters in the field. Making connections, and learning about the latest advancements can help keep your hospital/clinic/office at the forefront, and help you better serve your patients.



Increase Collaboration Between Physicians and Technologists

Formal and informal networking opportunities and interactive sessions present opportunities to expand on communication between different areas in the field, allowing for increased collaboration, and improved communication.



Learn about the Latest Advances from the Profession's Best and Brightest

How about four days offering more than 130 continuing education session and 80 scientific sessions offering over 700 oral presentations. An extensive scientific poster hall featuring over 800 abstracts. All led by leaders in the profession, offering strategic insight into the innovations that are changing our profession today...as well as the groundbreaking research that will drive the future of our profession.



Supplement Your Experience

Never miss another session when you add the **SNMMI Virtual Meeting** to your registration. Featuring 100 sessions from SNMMI's 2018 Annual Meeting—you'll get anytime access to great content, so you can continue learning long after you've left Philadelphia!

With hundreds of Scientific Abstract Oral and Poster Presentations available, it's impossible to view them all. Adding the **SNMMI Virtual Poster Hall** to your registration allows you to more closely examine this great peer research, and catch the posters and presentations you may have missed.

Get more information, including a customizable justification letters at: www.snmmi.org/ShowYourBoss

SCHEDULE AT A GLANCE

SATURDAY June 23, 2018

7:00–9:30 am
Hot Trot 5K Run/Walk
8:00 am–4:00 pm
Categorical Seminars
8:00 am–6:15 pm
Nuclear Medicine Review Course (NMRC) – Day 1
8:30 am–5:30 pm
Student Technologist Registry Review (STRR) – Day 1
9:00 am–4:45 pm
Educators Forum I & II
8:00 am–6:00 pm
SNMMI-TS CE Courses
1:30–4:45 pm
SNMMI CE Courses
5:00–6:00 pm
Saturday Evening Opening Ceremony
6:00–8:00 pm
Welcome Reception: Exhibit and Poster Hall Opening
8:00 pm–End
User Meetings

SUNDAY June 24, 2018

6:00–8:00 am
User Meetings
8:00 am–5:30 pm
Nuclear Medicine Review Course (NMRC) – Day 2
8:00–9:30 am
Opening Plenary Session: Henry N. Wagner Jr., MD, Lectureship
9:30 am–4:30 pm
Exhibit Hall
10:00 am–8:30 pm
Scientific & Educational Poster Hall
12:15–2:00 pm
Technologist Plenary Session & Awards Recognition
12:30–2:00 pm
Young Professionals Committee (YPC) Knowledge Bowl
12:30–6:15 pm
SNMMI CE Courses & Scientific Abstract Presentations
2:30–5:30 pm
Student Technologist Registry Review (STRR) – Day 2
2:45–4:45 pm
Educators Forum III
3:00–6:15 pm
SNMMI-TS CE Courses & Scientific Abstract Presentations
4:45–6:15 pm
Radiopharmaceutical Sciences Council (RPSC)/CMIIT Basic Science Summary Session
4:30–6:00 pm
Emerging Technologies Session (CMIIT) #1 (Non-CE)
6:30–8:30 pm
RPSC/CMIIT Poster Mixer
6:30 pm–End
User Meetings

MONDAY June 25, 2018

6:00–8:00 am
User Meetings
8:00–9:30 am
SNMMI Business Meeting and Special Plenary/Cassen Lectureship
9:00 am–6:00 pm
Scientific & Educational Poster Hall
9:30 am–4:30 pm
Exhibit Hall
10:00–11:30 am
Emerging Technologies Session (CMIIT) #2 (Non-CE)
10:00 am–5:45 pm
SNMMI-TS CE Courses
10:00 am–6:15 pm
SNMMI CE Courses & Scientific Abstract Presentations
2:00–3:00 pm
Young Investigators (YIA) and Young Professionals Committee (YPC) Awards Ceremony
3:00–4:30 pm
“Meet the Author” Session I
3:00–7:00 pm
Emerging Technologies Session (CMIIT) #3 (Non-CE)
3:00–4:30 pm
Computer and Instrumentation Basic Science Summary Session
6:00 pm–End
User Meetings

TUESDAY June 26, 2018

6:00–8:00 am
User Meetings
8:00 am–4:30 pm
CT and MRI Case Reviews
8:00 am–4:30 pm
SNMMI CE Courses & Scientific Abstract Presentations
9:00 am–5:00 pm
Scientific & Educational Poster Hall
9:30 am–3:00 pm
Exhibit Hall
10:00 am–4:30 pm
SNMMI-TS CE Courses
3:00–4:30 pm
Scientific Poster Awards
3:00–4:30 pm
“Meet the Author” Session II
4:45–6:15 pm
Henry N. Wagner, Jr., MD Highlights Symposium
6:15–7:15 pm
Closing Celebration
7:15 pm–End
User Meetings

REGISTER TODAY:

www.snmmi.org/AM2018

EXPLORE THIS YEAR'S HOST CITY: Philadelphia*

Get out of the convention center during your time at the 2018 Annual Meeting, and explore the beautiful city of Philadelphia.



Philadelphia, America's birthplace, is at the center of it all. It is easy and affordable to get here. Conveniently located in the Northeast United States, the fifth-most populous city in the nation is just 90 minutes from New York City and two hours from Washington, DC, by train.

The Cradle of American Liberty

Philadelphia is where the American Dream was founded. During your time in Philadelphia, be sure to visit these historically significant landmarks and museums, all located within one square mile:

Independence Hall

A UNESCO World Heritage Site that changed the world when the fathers of our nation used the location to debate and adopt both the Declaration of Independence and U.S. Constitution.

The Liberty Bell

A symbol of freedom that predates our nation's birth. Legend holds it sustained its trademark crack when it was rung to announce the signing of the Declaration of Independence.

The Museum of the American Revolution

Explore the dynamic story of the American Revolution using its rich collection of Revolutionary-era artifacts, personal items, letters, diaries and works of art.

The President's House

See where both George Washington and John Adams spent most of their presidencies before the White House was built in Washington, D.C.

National Museum of American Jewish History

The only major National Museum dedicated to telling the story of the Jewish people in America from 1654 to present.

African American Museum in Philadelphia

Visitors can explore the history and stories of African-American people and those of the African Diaspora.

*content and descriptions provided by www.discoverPHL.com

"CAN'T MISS" Photo Opportunities

Grab your selfie at these iconic landmarks. And of course, remember to tag SNMMI in the photos too: **#SNMMI18**



The "Rocky" Steps

The site of the famous running of the stairs by Rocky Balboa played by Sylvester Stallone in the "Rocky" film series. Walk or run up to top step to enjoy the amazing view of Philadelphia as seen from this Philadelphia Art Museum entrance.

LOVE Park

Officially JFK Plaza, Love Park earned its nickname from Robert Indiana's famous Love sculpture, which overlooks the plaza near Philadelphia's City Hall. The statue often draws a line of passers-by looking to snap a photo of the icon.

FAMOUS FOR ITS FOOD! While Philly is well regarded for its eclectic and award-winning cuisine, you can't miss these well-known establishments while you're in town!

Pat's King of Steaks

As the originator of the cheesesteak sandwich, Pat's has been recognized as the best by people worldwide.

Reading Terminal Market

The historic Reading Terminal Market is home to 80 renowned merchants who offer the best of Philadelphia's famous specialties. Made with the finest and freshest ingredients, visitors to the Terminal have access to an unparalleled variety of international and local cuisine, including Pennsylvania Dutch specialties, and mozzarella cheese made on site at the Valley Shepherd Creamery. After grabbing a bite to eat, visitors to the Terminal can take home a myriad of items to further their experience including fresh, local groceries; unique regionally themed souvenirs; and Philadelphia-based cookbooks.

IMPLEMENT WHAT YOU LEARN

New for 2018! In response to attendee feedback, SNMMI 2018 will offer **“Nuts and Bolts”** sessions—will provide you practical information you can use immediately when you return to the clinic. Here’s a sneak peek at some nuts and bolts sessions:

Basic Anatomy and Imaging Parameters for CT/MR in the Role of Fusion Imaging

In this session, you’ll review basic anatomy in CT and MRI reformatted images, and increase your clinical knowledge by learning to recognize common anatomical variants and pitfalls. The progression of fusion imaging requires the need for continuing education and experience in interpretation of cross sectional anatomy and the identification of anatomical pathology. This session will give you the increased confidence of CT and MRI interpretation you need.

Brain Imaging Read with the Experts (Nuts and Bolts)

In this session, you’ll improve reading skills and understand pitfalls of clinical neuroimaging procedures. This includes imaging brain metabolism (FDG-PET), brain protein aggregation pathologies (amyloid and tau) and the dopaminergic system. The course is intended for all levels of experience as cases with different degrees of difficulty will be presented in an interactive way. Experts will present unknown cases to other experts who will try to interpret the cases together with the audience.

Nuclear Medicine Management of Adult and Pediatric Hyperthyroidism

The session will give you the best management strategies for radioactive iodine (RAI) therapy in hyperthyroidism in children and adults. The presentations will include example cases to highlight key knowledge that will help you recognize common and unusual diagnoses responsible for hyperthyroidism. Each case will address technical factors in image acquisition, study protocol details, and pathophysiology of diseases.



Pediatric Nuclear Medicine: Read with the Experts

This session will provide you with a review of challenging and interesting clinical pediatric nuclear medicine cases. Discussions will be led by three speakers recognized as clinical experts in the field of pediatric nuclear medicine who have a demonstrated ability to communicate effectively and interactively with the audience. The experts’ teaching points on these challenging pediatric nuclear medicine cases will increase your knowledge, enhance study interpretation, and improve patient care.

Quality in Nuclear Medicine Town Hall Session

This session takes a deeper dive into quality in nuclear medicine. The value of Maintenance of Certification (MOC) will be discussed from both the ABR and ABNM perspectives. The value of data registries will also be discussed. Both topics will incorporate interactive “town hall” discussions with panels comprised of physicians, physicists, technologists and administrators. As an attendee, you’ll walk away with a better understanding of how you can implement and monitor quality at your practice.

Nuts & Bolts of PSMA Probe Development

This session will focus on the nuts and bolts of PSMA development. You’ll gain valuable expertise on PSMA agent development, preparation, and clinical use, with emphasis on “how to” perform each function.

The Science (and Art) of Scientific Writing and Publishing

Scientific writing skills are critical to success for researchers in every field, whether in basic science or clinical research. This session will provide you and scientists at all career stages with guidelines and advice on scientific writing and manuscript submission from leading experts in the field. After completing this session, you will have a better understanding of what makes a successful manuscript in the eyes of both leading scientists and a journal editor.

Spondylodiscitis: Role of Imaging for Diagnosis and Monitoring Treatment Response

This session will provide you, along with other imaging specialists, investigators, technologists, and clinicians, a review of and update on the role of imaging in spondylodiscitis. You’ll receive a practical guide for recommending, performing, and interpreting the most appropriate test(s) for diagnosing spondylodiscitis, and for monitoring response to treatment. Speakers will review the indications and limitations of radiographs, CT, MRI SPECT/CT, and PET/CT, including ^{18}F -FDG and ^{68}Ga -citrate. Plus, the clinical aspects of spondylodiscitis, typical radiologic findings, and the role of molecular imaging, including SPECT/CT and PET/CT for diagnosis and monitoring treatment response will be assessed.

How to Establish a Cardiac PET Program

In this session, you’ll discover what’s needed to successfully implement a new cardiac PET programs, and learn how to overcome the implementation challenges faced by new and established programs alike. Starting a cardiac PET program can be daunting. Get the guidance needed regarding pharmaceuticals, scanner, patient selection and protocol decisions to address the challenges and achieve greater success in starting a cardiac PET program.

Value of Quantification in Neuroimaging

Get introduced to methods of quantification in neuroimaging. New to this area? This session will help you gain a better understanding of the advantages of quantitative imaging. Already established? Use this session will help you further enhance your skills. The session will start with an overview of quantification methods and then move on to practical application in imaging of inflammation and imaging of protein aggregation pathologies.

PRE-MEETING CATEGORICAL SEMINARS

Additional registration fees may apply. A Categorical seminar is included for Weekend Only Attendees.

SNMMI's Annual Meeting offers full-day categorical seminars to provide you with a deeper level of understanding as you examine a single topic of clinical, scientific, or academic interest.

(CAT1) Radioiodine Theragnostics: Continuing the Update of the Controversies of the Management of Differentiated Thyroid Cancer

Nuclear Medicine performs more I-131 therapies than all other nuclear medicine therapies combined. The ATA (American Thyroid Association) 2015 guidelines has 34 recommendations that affect the practice of nuclear medicine involving the imaging and therapy of thyroid nodules and differentiated thyroid cancer.

(CAT2) Molecular Imaging of Inflammation and Infection: Focusing on the Future

This comprehensive session is designed for imaging specialists, investigators, technologists, and clinicians who want both a review of the current status of molecular imaging of inflammation and infection, as well as an update on new and emerging developments in the field.

(CAT3) PSMA Radioligand Therapy (PRLT) of End-Stage Prostate Cancer Patients Selected by PSMA PET/CT—The Power of Precision Oncology

In this categorical seminar, participants will assess the current state-of-the-art options for therapy of end stage prostate cancer. This seminar will explore a broad spectrum of the use of PSMA ligands for therapy of prostate cancer, including radiochemical aspects, preclinical studies, the role of PSMA PET/CT (using Ga68 and F-18) clinical utility, and the state-of-the-art role including newer radionuclides and alpha targeted radioligand therapy.

(CAT4) Radiomics and Machine Learning Methods and Applications in Radiology and Nuclear Medicine

In this categorical seminar, participants will receive a general introduction and more in-depth discussion into the emerging fields of radiomics and machine learning as applied to imaging, including an overview of various applications in nuclear medicine.

(CAT5) Cased Based Review of Advanced Cardiovascular Imaging

This categorical seminar will offer cardiovascular imaging specialists and clinicians, scientists, technologists, and trainees with a case-based, interactive and multimodality presentation to increase understanding of advanced multimodality cardiovascular imaging as applied to coronary artery disease, congestive heart failure and inflammation and infection.

(CAT6) Clinical Relevance of Molecular Neuroimaging

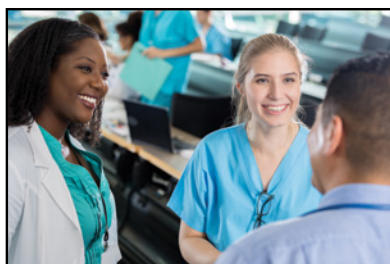
The field of molecular neuroimaging has been developing rapidly in the recent years. Numerous novel tracers have been introduced ranging from approved tracers for imaging amyloid-depositions to novel tracers for tau-aggregates or synaptic function. In this categorical seminar, participants will examine how molecular imaging of such processes may be beneficial for research and clinical applications.

(CAT7) PET/CT and PET/MR for Adults and Children: Fundamental and Evolving Practices

This categorical seminar will provide practitioners—physicians, physicists/scientists, technologists and resident/ students—with a practical nuts and bolts review of clinical PET/CT and PET/MR. The seminar will feature new technological developments in PET/CT and PET/MR instrumentation and the emerging role of machine learning, choosing and optimizing PET/CT and PET/MR protocols, and explore practical approaches to radiation dose reduction.

(CAT8) Primer on Radionuclide Dosimetry – Update

This categorical seminar will introduce the recently updated MIRD Committee Primer on Dosimetry. A series of sessions will be presented that correspond to the different primer chapters. Participants will review the MIRD schema for dosimetry including application to both macroscopic organs, cell-level calculations and its use in both therapy and diagnosis. Measurements required for dosimetry will be discussed. Dosimetry, forms and rules for investigational human use as well as an overview of the various forms required by international, U.S. and institutional regulatory and compliance bodies will be examined.



For full descriptions visit:
www.snmmi.org/AMCats

**PHILADELPHIA, PA
JUNE 23, 2018**

THEREOF LEV. XXVX PROCLAIM LIBERTY
HOUSE IN PHILAD^A BY ORDER OF THE ASSEMBLY

PASS AND STOW
PHILAD^A
MDCCLIII

**HOT
TROT 5K**

Sign up for the 4th Annual “Hot Trot 5K” run/walk. Proceeds will benefit the advancement of molecular and nuclear medicine technologists through professional development that promotes clinical excellence and optimal patient outcomes via the SNMMI-TS Professional Development and Education Fund. A portion of the registration proceeds will support Bianca’s Kids, a local Philadelphia charity that grants wishes to children in need. Come out, have fun, and support your field.

www.snmmi.org/HotTrot5k

Saturday, June 23 > 7:00 am > Philadelphia, PA

THE SNMMI 2018 EXHIBIT HALL

Providing leaders in the profession with direct access to more than 170 of the top industry suppliers - that's the mission of the SNMMI Annual Meeting Exhibit Hall. Explore the latest technologies, witness ground-breaking new products and services, and connect with the companies that make it happen.

Absolute Imaging Solutions
ABX advanced biochemical compounds
ABX-CRO advanced pharmaceutical services
Actinium Pharmaceuticals
Advanced Accelerator Applications
Advanced Cyclotron Systems, Inc.
AirNet II, LLC
Alzheimer's Association
American College of Nuclear Medicine (ACNM)
American College of Radiology (ACR)
AMICI, Inc.
AnazaoHealth Corporation
ANMI SA
ARRT, The American Registry of Radiologic Technologists
Astellas Pharma US
Australian and New Zealand Society of Nuclear Medicine (ANZSNM)
Bayer - Oncology
Bayer - Radiology
BC Technical, Inc.
Becquerel & Sievert Co., Ltd
Berthold Technologies

Best Cyclotron Systems, Inc.
Biodex Medical Systems, Inc.
Blue Earth Diagnostics, Inc.
Board of Pharmacy Specialties (BPS)
Bracco Diagnostics
Brain Biosciences, Inc.
Bruker BioSpin
Cambridge Isotope Laboratories Inc.
Canadian Association of Nuclear Medicine (CANM)
Canon Medical Systems USA, Inc.
Capintec, Inc.
Cardinal Health
Cardiovascular Imaging Technologies, LLC
Center of Molecular Research
Certus International, Inc.
CHEMATECH
China Isotope & Radiation Corporation (CIRC)
Chinese Society of Nuclear Medicine
CMR Naviscan Corporation
Comecer Group
Curium
Cyclomedica Australia PTY LTD

Cyclomedical International, Inc.
Data Spectrum Corporation
Digirad
DOSIsoft
ec² Software Solutions
Eckert & Ziegler Isotope
Eckert & Ziegler Radiopharma
Elysia-Raytest
European Association of Nuclear Medicine (EANM)
GE Healthcare
Hake Medical Technology (Beijing) Co. Ltd.
Hermes Medical Solutions, Inc.
Hidex Oy
Huayi Isotopes Company
IBA S.A.
Intersocietal Accreditation Commission (IAC)
INVIA Medical Imaging Solutions
Invicro
IQ Medical Services
ISOFLEX USA
isoSolutions Marketing & Management Inc.
IsoTherapeutics Group, LLC
ITM Isotopen Technologien München AG

Japanese Society of Nuclear Medicine
Jubilant DraxImage
LabLogic Systems Limited
Lantheus Medical Imaging, Inc.
Lucerno Dynamics, LLC
Lung Cancer Alliance
Macrocyclics
MarShield
MedImage, Inc.
Mediso Medical Imaging Systems Ltd.
Men's Health Network
MiE America Inc.
MLabs
MIM Software Inc.
Mirada Medical
MOLECUBES NV
MR Solutions Ltd.
MultiFunctional Imaging LLC
NorCal CarciNET Community
NorthStar Medical Radioisotopes, LLC
Nuclear Diagnostic Products, Inc.
Nuclear Medicine Technology Certification Board (NMTCB)
Nuclear Shields B.V.
NUCMEDCOR

Numa Inc.
Oncidium Foundation
ORA - NEPTIS
PETNET Solutions
Pharmalucence
Philips
Pinestar Technology, Inc.
Piramal Imaging
PMOD Technologies LLC
Prescient Imaging LLC.
Progenics Pharmaceuticals, Inc.
Radiation Shielding Inc.
RadioMedix INC
Rotem Industries
Scintomics GmbH
SEDECAL Molecular Imaging
Segami Corporation
Siemens Healthineers
SOFIE
Southern Scientific
Southwestern Imaging Systems & Service (SWISS)
Spectrum Dynamics Medical, Inc.
Spectrum Pharmaceuticals, Inc.
Springer
Susan G. Komen Philadelphia
SynterMed, Inc.

Synthra GmbH
Taiyo Nippon Sanso Corporation
Tema Sinergie S.P.A.
The Korean Society of Nuclear Medicine
Theragnostics, Inc.
Thinking Systems Corporation
ThyCa: Thyroid Cancer Survivors' Association, Inc.
TransLite, LLC
Trasis
Triad Isotopes, Inc.
Tru-Motion Products
UPPI, LLC
US DOE Isotopes
Von Gahlen International, Inc.
Waters Corporation
WomenHeart
Wolfmet
Wolters Kluwer
World Molecular Imaging Society (WMIS)
Yantai Dongcheng Biochemicals Co., Ltd.
Current Exhibitors (as of February 14, 2018)

EXHIBIT HALL EVENTS

Exhibit/Poster Hall Opening & Welcome Reception— Saturday, June 23 | 6:00–8:00 pm
Hosted by the SNMMI 2018 Annual Meeting Exhibitors
SNMMI's Exhibit/Poster Hall is always packed with more than 160 companies representing the latest innovations in nuclear medicine and molecular imaging products and services. In addition, view scientific posters in the Poster Hall representing notable studies and conclusions in this dynamic field of medicine. Network with your colleagues, meet new friends, and gain new knowledge in the SNMMI Booth while enjoying hors d'oeuvres and refreshments. Please stop by and thank exhibiting companies for their generous support of the SNMMI 2018 Annual Meeting.

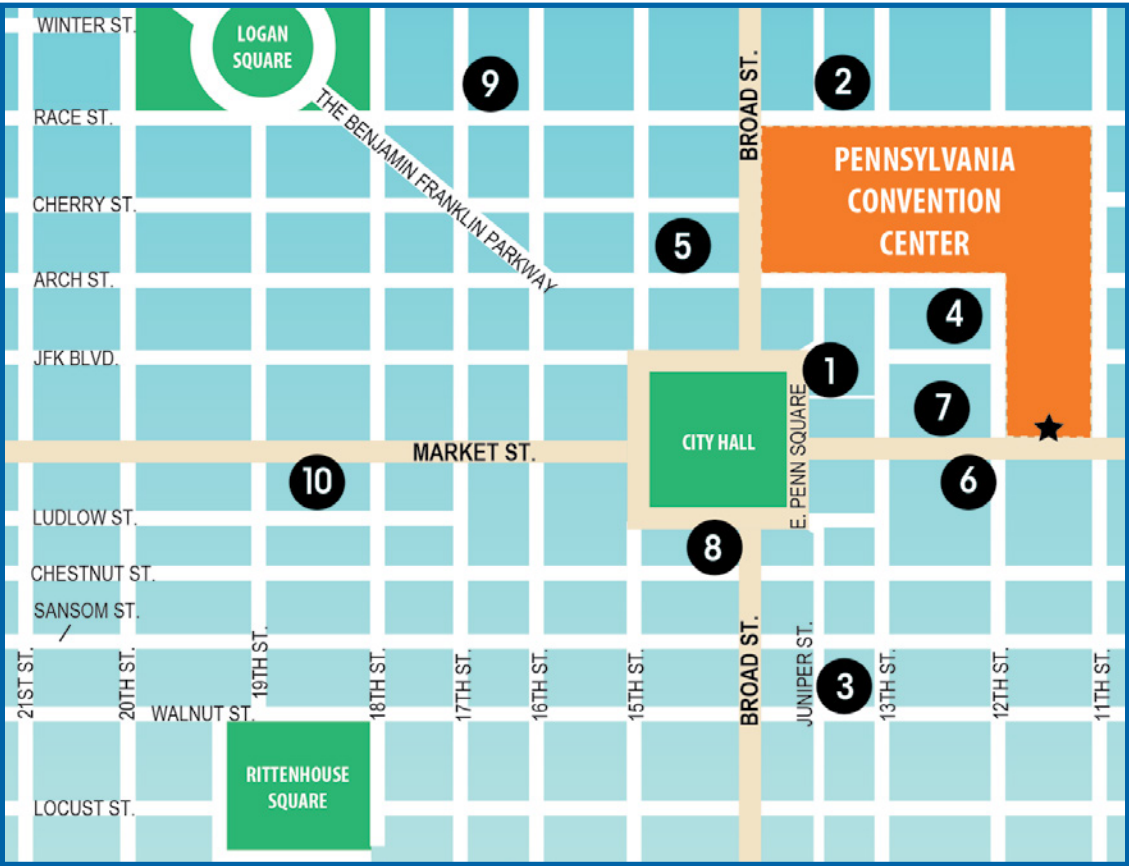
The Exhibit/Poster Hall will be open from Saturday evening to Tuesday afternoon during the SNMMI Annual Meeting.

Hot Spot Cash Drawings!

Up to 20 exhibitors will designate their booth as a "Hot Spot." Attendees will have 6 chances to win a \$300 CASH drawing by being in the right booth at the right time. There will be 2 drawings each day during Dedicated Exhibit Hall Hours. Show Management will call out the hot spot company name and booth number. Any attendees standing in that booth when the company name is called will be eligible to win the \$300 cash prize.



ANNUAL MEETING HOTELS



Hotels	Map Locator	Single /Double*	Restaurants	Internet /Night	Fitness Center†	Business Center	Room Service	Comp Breakfast	Distance to CC	Distance to Airport	AAA Ratings	Address
Courtyard by Marriott Philadelphia Downtown	1	\$246	1	Comp	Yes	Yes	No	No	3 blocks	8 miles	3	21 N. Juniper Street
Hampton Inn Philadelphia Center City Convention Center	2	\$216	0	Comp	Yes	Yes	No	No	2 blocks	11 miles	3	1301 Race Street
Holiday Inn Express Philadelphia Midtown	3	\$219	0	Comp	Yes	Yes	No	Yes	4 blocks	8 miles	3	1305 Walnut Street
Home2 Suites by Hilton Philadelphia	4	\$249	0	Comp	Yes	Yes	No	Yes	Adjacent	10 miles	3	1200 Arch Street
Le Meridien Philadelphia	5	\$251	1	Comp	Yes	Yes	Yes	No	2 blocks	10 miles	4	1421 Arch Street
Loews Philadelphia Hotel	6	\$249	1	Comp	Yes	Yes	Yes	No	1 block	11 miles	4	1200 Market Street
Philadelphia Marriott Downtown (HQ)	7	\$269	1	\$12.95**	Yes	Yes	Indoor	No	Connected via skywalk	8 miles	4	1201 Market Street
Ritz-Carlton Hotel Philadelphia	8	\$279	1	Comp	Yes	Yes	Yes	No	2 blocks	9 miles	4	10 S. Broad Street
Sheraton Philadelphia Downtown	9	\$219	1	Comp	Yes	Yes	Yes	No	2 blocks	11 miles	3	201 N. 17th Street
Sonesta Philadelphia Rittenhouse Square	10	\$239	1	Comp	Yes	Yes	Yes	No	6 blocks	9 miles	3	1800 Market Street

*Some hotels will charge additional fees for more than two people to a room. Rates quoted are for one night and exclude taxes and additional fees.
Most rooms have two queen beds.
**Internet is complimentary for Marriott Rewards members.

Consider Your Choices
RUBY-FILL® Rubidium
(Rb 82) Generator

You Now Have More Options When it Comes to
Cardiac PET Imaging

RUBY-FILL Generators and Elution Systems are backed by:

- 7 years of proven clinical experience
- Over 35,000 patients imaged world-wide
- A robust U.S. distribution channel
- Experienced clinical applications and service support

RUBY-FILL is available today to meet your unique cardiac PET imaging needs. With advanced features and user-friendly technology, RUBY-FILL will enable you to obtain accurate, high-quality imaging studies so you can make confident patient management decisions reliably and efficiently.

Experience the RUBY-FILL Rubidium (Rb 82) Generators and
Ruby Elution System Difference TODAY!

- Automated quality control for lab efficiency
- Engineered for user confidence and efficiency with a 30 liter volume and a long 60-day shelf life
- Accurate patient specific infusion options including constant-activity and weight-based dosing
- Built-in safety controls to protect staff and patients

Contact your local sales representative to discuss business solutions tailored to
YOUR needs or for more information visit www.draximage.com

Important Safety Information

Indication

RUBY-FILL® Rubidium Rb 82 Generator is a closed system used to produce rubidium Rb 82 chloride injection for intravenous use. Rubidium Rb 82 chloride injection is a radioactive diagnostic agent indicated for Positron Emission Tomography (PET) imaging of the myocardium under rest or pharmacologic stress conditions to evaluate regional myocardial perfusion in adult patients with suspected or existing coronary artery disease.

WARNING: UNINTENDED STRONTIUM 82 (Sr 82)
AND STRONTIUM 85 (Sr 85) RADIATION EXPOSURE

Please see full prescribing information for complete boxed warning.

Unintended radiation exposure occurs when the levels of Sr 82 or Sr 85 in the Rubidium Rb 82 chloride injection exceed specific limits.

- Perform generator eluate tests:
1. Determine Rb 82, Sr 82, Sr 85 levels in the eluate:
 - Once daily, prior to any drug administration, and
 - With additional daily tests after detection of an Alert Limit.
 2. Stop use of the generator at its Expiration Limit.

You are encouraged to report negative side effects of prescription drugs to the FDA. Visit MedWatch or call 1-800-FDA-1088. RUBY-FILL® is a registered trademark used under license by Jubilant DraxImage, Inc.

Jubilant DraxImage Inc.
16751 Trans-Canada Highway, Kirkland, Quebec, Canada H9H 4J4
Phone: 1.888.633.5343 / 514.630.7080 Fax: 1.866.431.4288 / 514.694.3865
www.draximage.com
2017CARD081



REGISTRATION INFO

REGULAR MEETING REGISTRATION† (Saturday – Tuesday)

Early-Bird Registration Rates (on/before April 19, 2018)

Registration Type	Member	Nonmember
Physician	\$665	\$1,145
Scientist	\$665	\$1,145
Industry	\$665	\$1,145
Technologist	\$390	\$655
Laboratory Professional*	\$420	\$685
Emeritus–Physician/Scientist	\$315	n/a
Emeritus–Technologist	\$195	n/a
Resident and Student**	\$205	\$330
Technologist Student**	No Charge	\$75
Companion/Guest (16 yrs or older)	\$50	

Pre-Reg Registration Rates (on/before June 21, 2018)

Registration Type	Member	Nonmember
Physician	\$780	\$1,290
Scientist	\$780	\$1,290
Industry	\$780	\$1,290
Technologist	\$450	\$705
Laboratory Professional*	\$485	\$795
Emeritus–Physician/Scientist	\$350	n/a
Emeritus–Technologist	\$215	n/a
Resident and Student**	\$230	\$380
Technologist Student**	No Charge	\$105
Companion/Guest (16 yrs or older)	\$50	

Onsite Registration Rates (beginning June 22)

Registration Type	Member	Nonmember
Physician	\$890	\$1,400
Scientist	\$890	\$1,400
Industry	\$890	\$1,400
Technologist	\$550	\$805
Laboratory Professional*	\$595	\$905
Emeritus–Physician/Scientist	\$460	n/a
Emeritus–Technologist	\$315	n/a
Resident and Student**	\$340	\$490
Technologist Student**	No Charge	\$205
Companion/Guest (16 yrs or older)	\$50	

*Laboratory Professionals must provide written verification.

**Residents and Students (Intern, Scientist In-Training, Medical/Graduate/Technologist Student) must provide written verification on official letterhead signed by Program Director, or Advisor. Technologist Student and Resident-In-Training Fees do not include CE Credit. Residents-In-Transition do receive CE Credit.

†Regular Registration does not include categoricals or specialty workshops. These events require an additional fee. Weekend registration includes a categorical course with the exception of technologists/technologist students who will receive additional CE course credit beginning Saturday afternoon, in place of the eliminated tech categorical.

Pre-Meeting Categorical Seminars — (Requires an additional fee unless you are a weekend attendee)

See Page 12 for listings:

Saturday, June 23, 2018

Member Fee: \$150 | Nonmember Fee: \$200

Specialty Workshops

• The Nuclear Medicine Review Course

Saturday–Sunday, June 23–24, 2018

Member Fee: \$200

Nonmember Fee: \$300

• The Student Technologist Registry Review and Mock Exam

Saturday–Sunday, June 23–24, 2018

Fee: \$50



More Reasons to Become a SNMMI Member

In addition to the obvious registration discounts available for SNMMI members, attending the Annual Meeting will give you a tangible glimpse into the importance and power of belonging to your professional association. Visit www.snmmi.org/join to become a member today!

XENON Xe 133 Gas



- Lantheus Medical Imaging is the leading U.S. manufacturer of Xenon-133
- Lantheus secures Xenon-133 supply beyond 2016 with the Institute for Radioelements (IRE)¹
- Lantheus completed our first commercial shipment of Xenon-133 supplied by Institute for Radioelements (IRE)²
- Calidose™ Dispenser System is specifically designed and FDA approved for use with Lantheus Medical Imaging Xenon-133³

To order, contact your local commercial radiopharmacy or Lantheus Nuclear Products Sales Representative or call:

Customer Service
1-800-299-3431

Monday – Friday
7:30 AM – 6:00 PM EST

TechneLite
Technetium Tc 99m
Generator

Visit
TechneLite.com
to learn more
about LEU TechneLite®

Celebrating more than
50
fifty years of manufacturing
Technetium Tc 99m Generators



- Contains ≥95% Mo-99 derived from Low Enriched Uranium (LEU)⁴
- Meets CMS criteria for LEU dose Q-code “add on” for HOPPS patient reimbursement⁵
- 100% Assay and Mo-99 breakthrough testing⁴
- 100% terminal sterilization⁴
- 99% on-time delivery⁴

To order, contact your
Lantheus Nuclear Products Sales Representative
or call:

Customer Service
1-800-299-3431

Monday – Friday
7:30 AM – 6:00 PM EST

Brands you know. Quality you trust.

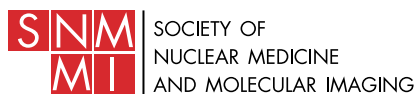
www.lantheus.com

Lantheus
Medical Imaging

REFERENCES

1. Lantheus Medical Imaging Press Release, Lantheus Medical Imaging Announces XENON-133 Supply Agreement with Institute for Radioelements, 2015; <http://phx.corporate-ir.net/ExternalFile?Item=UGFyZW50SUQ9MjY3NTExeEhNoaWwSUQ9LTFBVHlwZT0z&t=1>
2. Lantheus Medical Imaging Press Release: Lantheus Holdings Announces First Commercial Shipment of Xenon 133 Supplied by Institute for Radioelements (IRE), 2016; investor.lantheus.com/phoenix.zhtml?c=241435&p=irol-newsArticle&iD=2181138
3. Xenon Xe-133 Gas [package insert], N. Billerica, MA; Lantheus Medical Imaging, Inc; 2016
4. Quality Data on File: Lantheus Medical Imaging, Inc.
5. Federal Register / Vol. 78, No. 237 / Tuesday, December 10, 2013 p. 75002

Technetium and corporate logo are registered trademarks of Lantheus Medical Imaging, Inc.
Calidose is a trademark of Lantheus Medical Imaging.
© 2018 Lantheus Medical Imaging, Inc. All rights reserved. JNMAd-0118 January 2018



**1850 Samuel Morse Drive
Reston, VA 20190-5316**

Imaging the Future of Human Health

**EARLY-BIRD DEADLINE:
THURSDAY, APRIL 19, 2018
REGISTER NOW & SAVE!
www.snmmi.org/am2018**